

SPECIFICATIONS

Rated (额定参数): 300V, 10A
 Dielectric strength (抗电强度): AC2500V/1 Minute
 Insulation Resistance (绝缘电阻): 1000MΩ Min
 Contact Resistance (接触电阻): $20m\Omega$ Max
 Impulse Withstand Voltage: 3000V
 Screw Torque (扭矩): 7.0Lb.in
 Wire Range (线径): 1.4~2.2AWG
 Temp. range (操作温度): $-40^{\circ}\text{C}\sim+105^{\circ}\text{C}$
 MAX Soldering (瞬时温度): $+250^{\circ}\text{C}, 5\text{s}$

Housing Material (塑件): PBT (UL94 V-0)
 Contact (端子): Phosphor bronze,
 Plated: Gold Flash/Ni (镀铜镀半金镍)
 Screw (螺丝): M3.0, Steel, Ni plating (钢, 镀锌)
 螺母: M3, 钢镀锌

PITCH RANGE		NOMINAL DIMENSION RANGE					
IN MM	OVER	IN MM	OVER	OVER	OVER	OVER	OVER
6	10	30	60	100	100	150	150
TO	TO	TO	TO	TO	TO	TO	TO
10	24	60	100	150	150	150	150
± 0.10	± 0.15	± 0.25	± 0.30	± 0.30	± 0.50	± 0.70	± 1.00

IEC 标准

Pollution degree	2	2	3
Overvoltage category	II	III	III
Rate voltage (V)	600V	1000V	1000V
Rate current (A)		24A	

Ordering Information

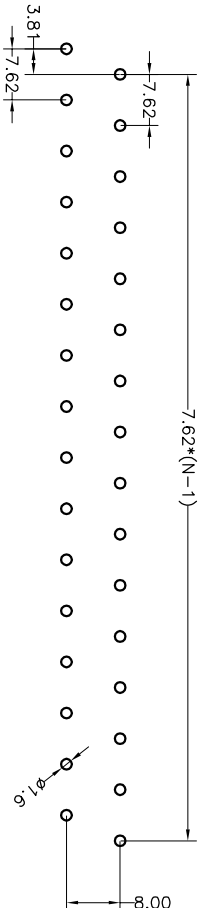
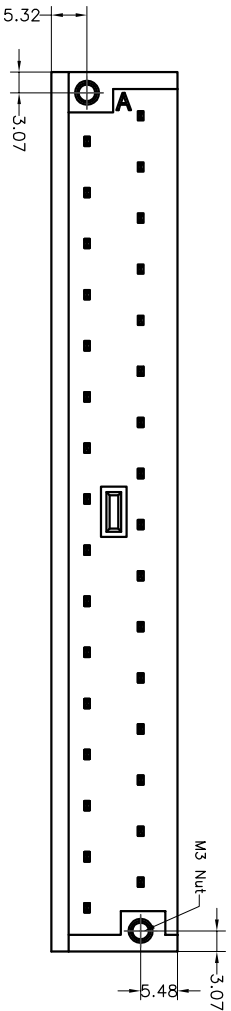
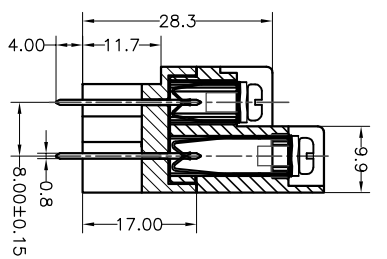
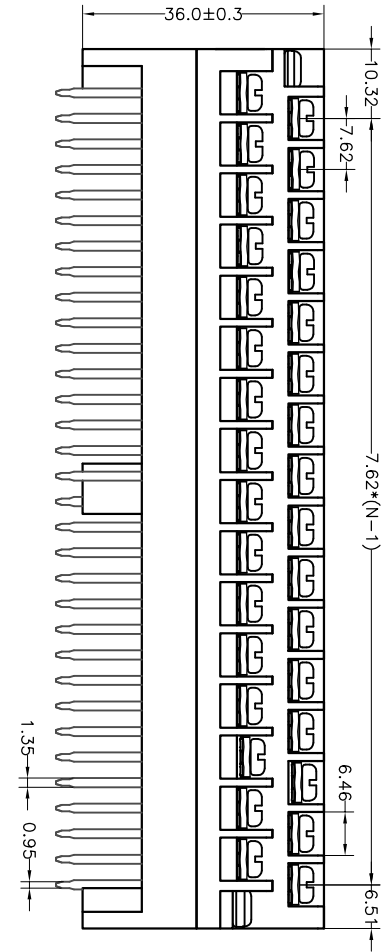
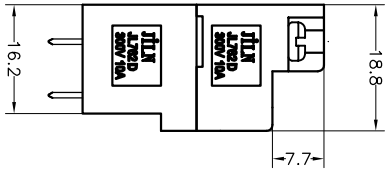
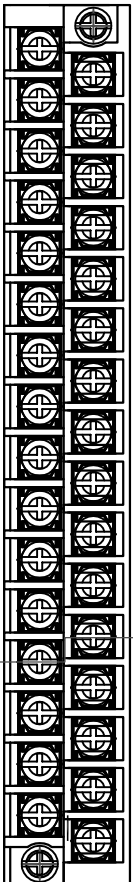
JL762D - 762 XX G 0 1

Pitch
762=7.62PH

No. of pins
2x3P~2x24P

Housing Color
 B=Black
 G=Green
 U=Blue
 R=Red
 W=White
 Y=Yellow
 O=Orange
 E=Grey

Packing
 O=Pe bag
 T=Tube
 A=Troy



PCB LAYOUT

DRAW	SHUANGPING ZHENG		SCALE	FIT	PART NO.	JL762D-762XXG01
	UNIT	mm	A4	mm		
CHECK	LICHAO LIU		SIZE	A4	TITLE:	JL762D加高型-2XNF复合栅栏式端子台/间距7.62*8.0/浅灰色
APPROVE	YONGLANG GAO		SHEET	1/1		
			PROJ.			

JIN 东莞市锦凌电子有限公司
 DONGGUAN JINLING ELECTRONIC CO., LTD